

No Passing Zone Log (CHE)

Route: 008A (WILSON MILLS RD.)  
 Length: 2.753 Direction: East

From: 0.000 COUNTY LINE RD.  
 To: 2.753 SR 306

Length	Left	C/L	Right	Length	Control Points
0.178	0.938		0.848	0.848	EAST HILL DRIVE (LT)
	0.760			0.358	
0.062	0.614			0.552	LAUREL RD (LT)
	0.552		0.490		
0.170	0.170				
0.170	0.000			0.000	COUNTY LINE RD.

*1/6/2014 - NWR  
 to see Revision  
 C PENN*

*Split* {  
 8A County Line  
 ↳ East Hill  
 8B East Hill  
 ↳ Coves  
 8C Coves  
 ↳ SR306

No Passing Zone Log (CHE)

Route: 008A (WILSON MILLS RD.)

From: 0.000 COUNTY LINE RD.

Length: 2.753

Direction: East

To: 2.753 SR 306

Scale: 1.00 mile/page



Length	Left	C/L	Right	Length	Control Points
	2.000		2.000		
0.206				0.314	1.968 MEADOWRIDGE DR. (LT)
	1.794				1.794 SUMMERS RD. (LT)
			1.686		
	1.659				
			1.489		1.451 CAVES RD
0.428				0.428	
	1.231				
			1.061		

MAKE NO PASSING

No Passing Zone Log (CHT)

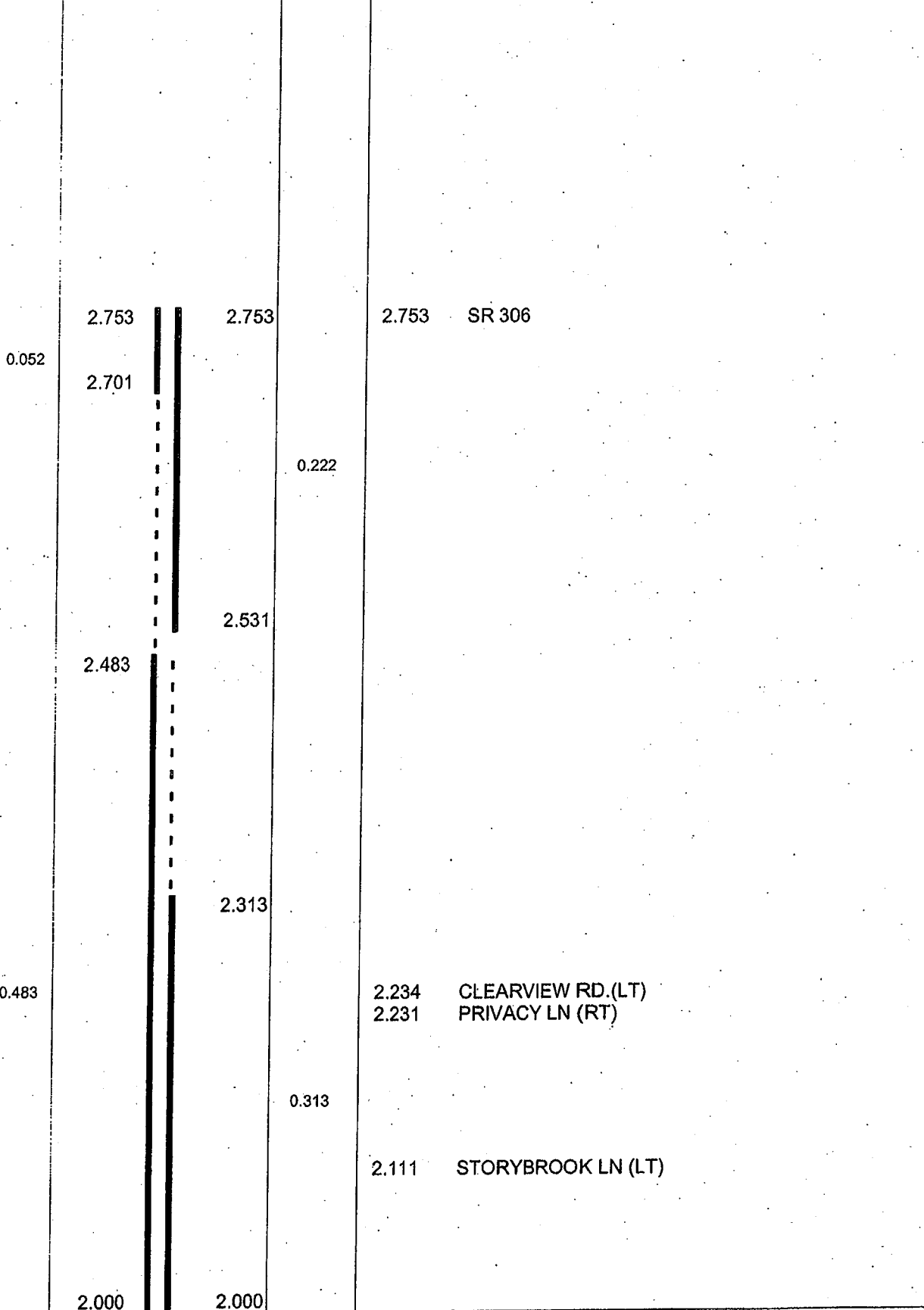
Route: 008A (WILSON MILLS RD.)

From: 0.000 COUNTY LINE RD.

Length: 2.753 Direction: East

To: 2.753 SR 306

Length Left C/L Right Length Control Points Scale: 1.00 mile/page



Sheet total equivalent length of solid line: 1.167

Accum. total: 3.658

© 2009 - MasterMind Systems, Inc. - Traffic Safety Suite

# Geauga County Engineering Department

## No Passing Zone Log

Route: **0008D (WILSON MILLS RD)**  
 Length: **1.468**      Direction: **East**

From: **2.753 SR 306**  
 To: **4.221 SPERRY RD**

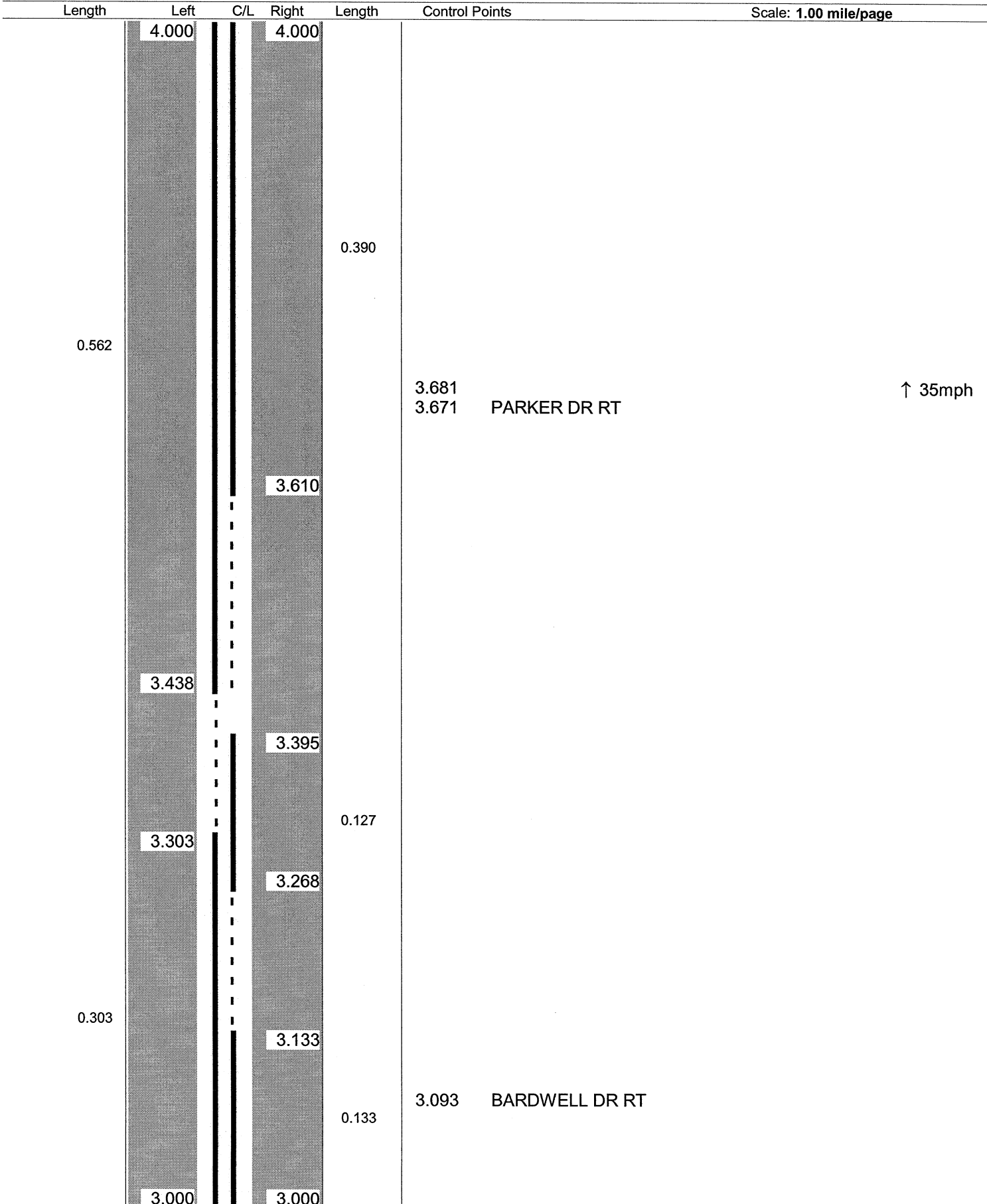
Length	Left	C/L	Right	Length	Control Points	Scale: 1.00 mile/page
0.239	3.000		3.000	0.239	2.902    OAKWOOD LN LT	
	2.761		2.761		2.753    SR 306	

# Geauga County Engineering Department

## No Passing Zone Log

Route: **0008D (WILSON MILLS RD)**  
 Length: **1.468** Direction: **East**

From: **2.753 SR 306**  
 To: **4.221 SPERRY RD**



Sheet total equivalent length of solid line: 1.626

Accum. total: 2.106

# Geauga County Engineering Department

## No Passing Zone Log

Route: **0008D (WILSON MILLS RD)**  
 Length: **1.468**      Direction: **East**

From: **2.753 SR 306**  
 To: **4.221 SPERRY RD**

Length	Left	C/L	Right	Length	Control Points	Scale: 1.00 mile/page
0.221	4.221	4.000	4.221	0.221	4.221    SPERRY RD	

Sheet total equivalent length of solid line: 0.442

Accum. total: 2.548