

CH 46

No Passing Zone Log (TRO)

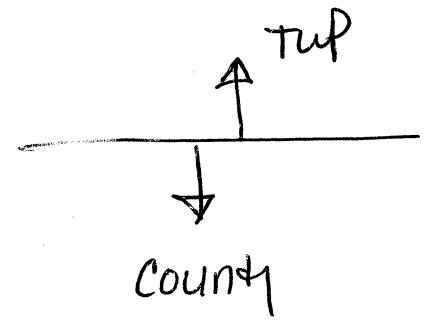
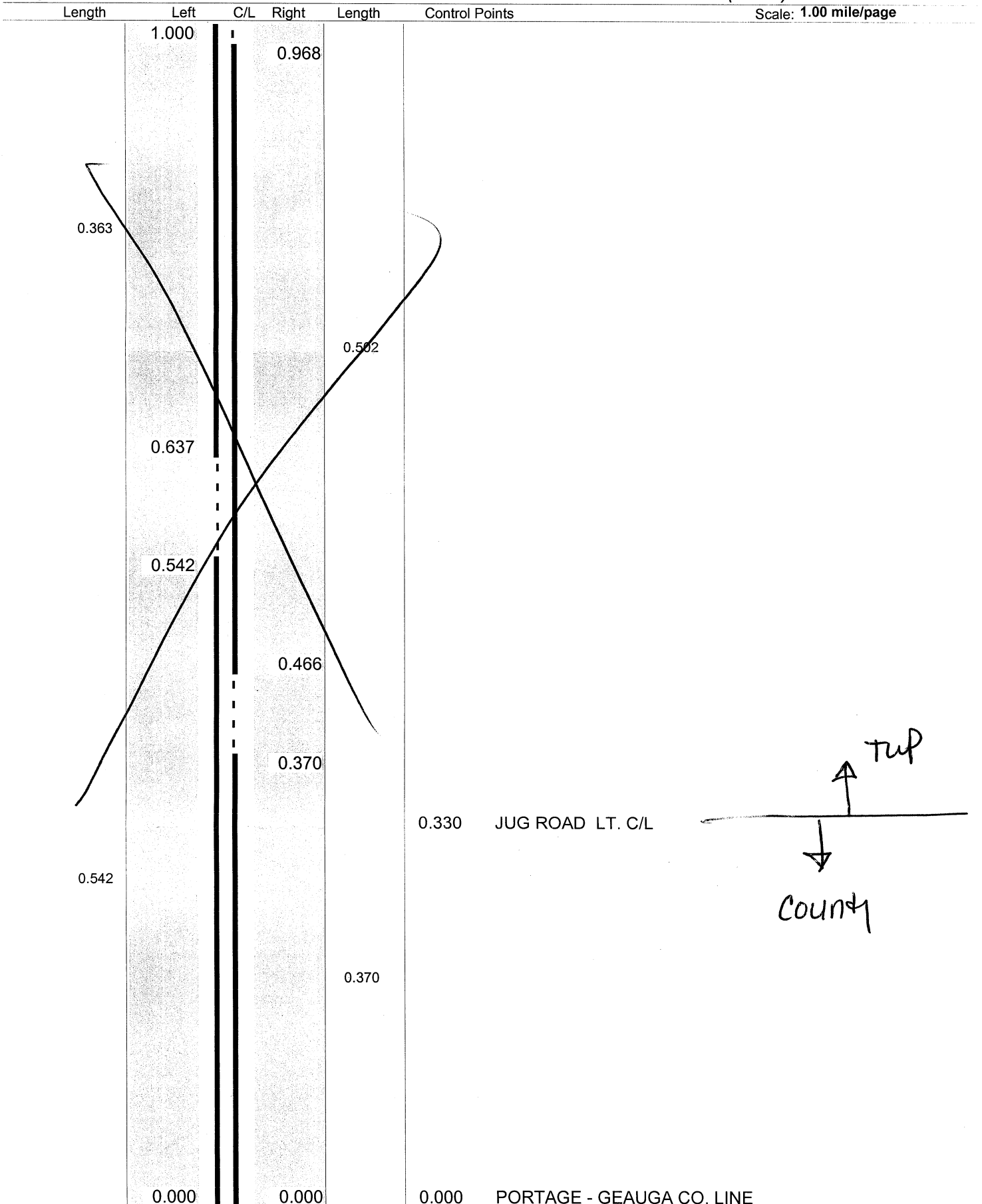
Route: (GROVE ROAD)

Length: 1.381

Direction: East

From: 0.000 PORTAGE - GEAUGA CO. LINE

To: 1.381 MUMFORD RD. (CNTR.)



Sheet total equivalent length of solid line: 1.833

Accum. total: 1.833

No Passing Zone Log (TRO)

Route: **(GROVE ROAD)**

Length: **1.381**

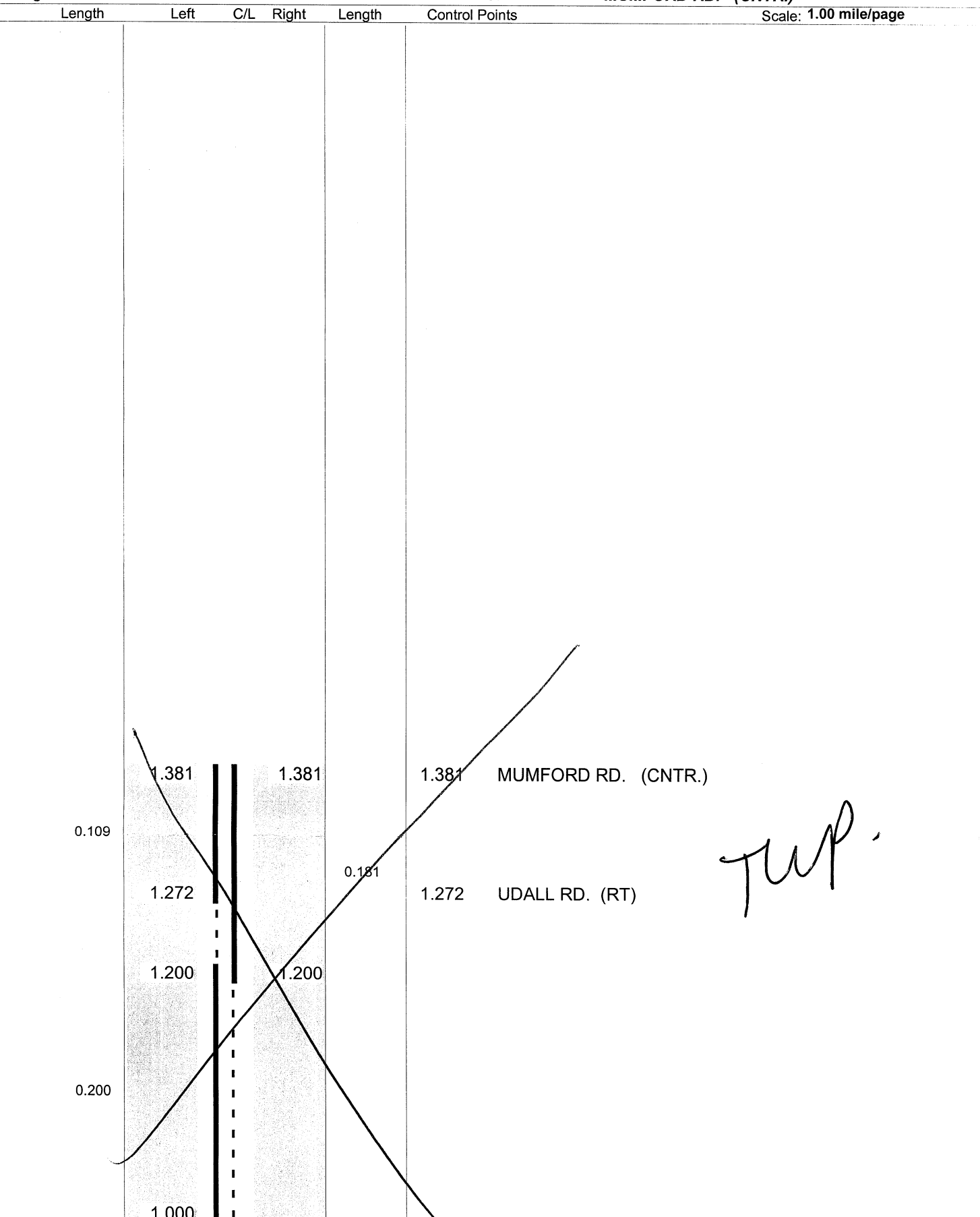
Direction: **East**

From: **0.000**

To: **1.381**

PORTAGE - GEAUGA CO. LINE

MUMFORD RD. (CNTR.)



Sheet total equivalent length of solid line: 0.558

Accum. total: 2.391